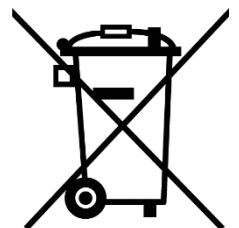




## Battery Motor – Radio Drive

**ERB35LE**



03-2020

## 1. General safety guidelines



### Notes on the product



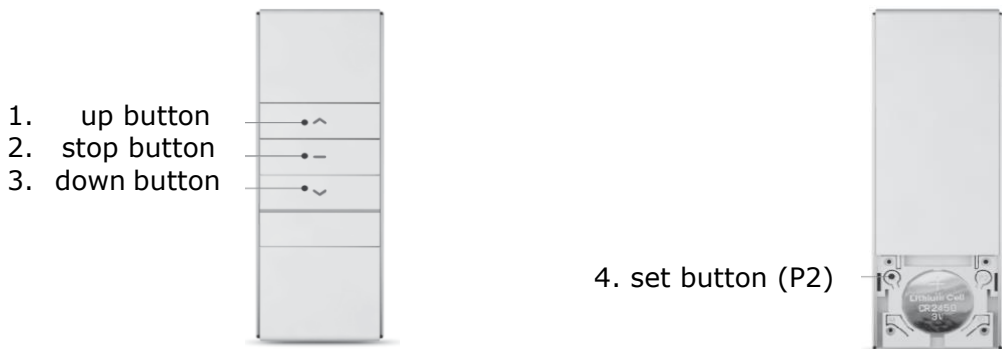
- Check the drive for intactness. Do not use the product if you discover any damage. In this case, contact the point of sale.
- Only use the drive to open and close suitable hangings.
- Read this manual completely before starting the installation.
- Make sure that the roller blind's tube, in which you intend to use the drive, is undamaged.
- Check that the blind can be opened and closed smoothly.
- Replace damaged parts if you find any defects.
- Inform all persons in safe use of the controls and the drive.
- Observe the blind during the operation and keep people away until the blind is fully opened or closed.
- Do not allow children to play with the control unit.

## 2. Electrical connection

- The distance between the drive and the transmitter should be at least 300 mm.
- The distance between the two radio receivers should be at least 500 mm.
- Strong, local transmitters (e.g. radio headphones) whose transmission frequency is identical to the control (433MHz) can influence the function.
- It is recommended to fully charge the drive with the CH264 charger before the first commissioning. Only then will the motor reach full power. The charger is equipped with a control display that allows you to check the charge level at any time. During charging, the indicator lamp lights up red. Green when the engine is fully charged. The engine can also be operated and programmed during charging.

### 3. Programming of the remote control (radio) transmitters

#### 3.1 Check the connection between the engine and transmitter

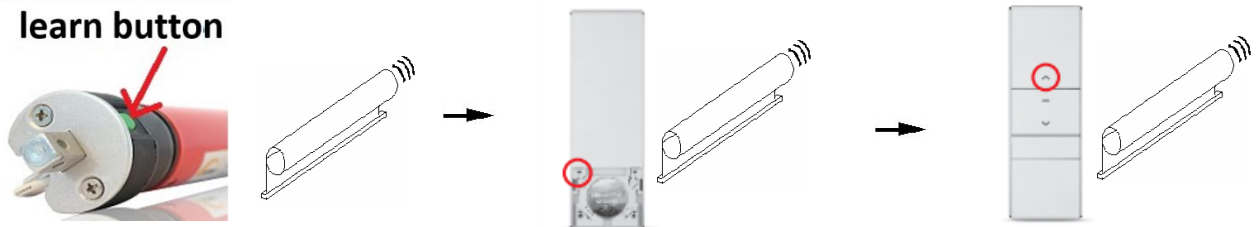


1. Test the connection between the handheld transmitter (remote controller) and the motor by pressing the **up** or **down button** to move the drive up or down. If the connection exists, please go directly to point 3.3.
2. If the motor does not move, you must first establish the connection between the motor and the transmitter.

**Important:** For all programming, please only use the left P2 button as shown.

#### 3.2 Establishing and deleting the connection between the motor and the remote controller

*Establish connection:*



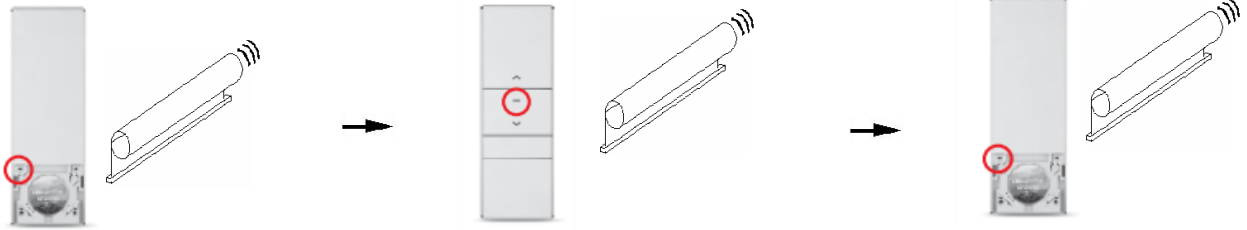
1. Press and hold the **learn button** on the motor head until the drive reacts (usually after 3 seconds) with a beep and an up/down movement. Release the learn button immediately.

2. Press the **P2 button** twice. When pressed for the first time, the drive responds with a beep and an up/down movement. When pressed twice, the drive responds with only one beep.

3. Press the **up button** once. The drive confirms with several beeps and an up/down movement.

The connection from the drive to the remote controller is thus established. You can now control the drive by pressing the **up** and **down buttons** on the remote controller.

Delete connection:



1. Press the **P2 button** once. The drive confirms with a beep and an up/down movement.

2. Press the **stop button** once. The drive confirms with a beep and an up/down movement.

3. Press the **P2 button** once. The drive confirms with several beeps and an up/down movement.

### 3.3 Check and change the direction of rotation of the drive

**Important:** Please ensure the direction of rotation before starting to input the motor. We are not liable for product damage caused by negligence during installation.

If the direction of rotation is reversed, you must repeat all the steps in section 3.2 under *Establish connection*. Only in step 3 press the **down button** instead of the up button on the remote control.

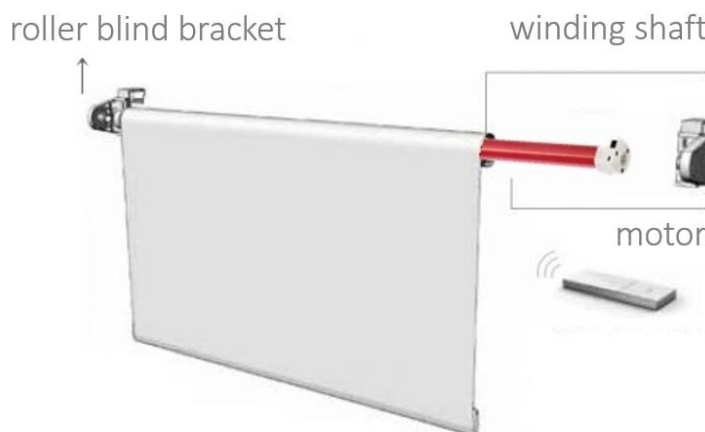
The direction of rotation is now changed.

## 4. Installation of the motor



- Do not hit the motor with hard objects – not even to push it into the winding shaft. This can cause damage to the drive and roller blind's shaft.
- Avoid installing the tubular motor in damp places or places where it comes into contact with water

### Installation



- Place the tubular motor into the roller blind's shaft.
- The driver and adapter must be completely recessed into the winding shaft. The adapter must be first pushed into the groove provided for this purpose on the crown of the motor head.
- The drive head of the motor can be installed on the right or left side.
- During installation, make sure that the drive head can be reached at any time after installation in order to charge the drive via the external power supply.

## 5. Setting the end positions



- You need to define the upper and lower end positions, when reaching these, the drive switches off automatically. To do this, the drive system must be fully inserted.
- You can choose whether to set the lower or upper end position first.
- The time between each button combination should not exceed 6 seconds. Otherwise, the setting status is aborted.
- After each command, the drive reacts with an up/down movement. This indicates that the drive has recognised the respective command.



With some roller blind fabrics, enormous temperature fluctuations cause the fabric length to change. Depending on the fabric and overall length, in extreme cases, there can be a shortening in cold weathers and a lengthening at high temperatures, which can even be in the centimetre range. Especially for cassette systems it is absolutely necessary not to parameterize the upper end position up to the stop but to leave at least 1 cm clearance!

In the following, the settings of the end positions are described, starting with the lower end point.

### 5.1 Setting the desired end positions:



1. Press the **P2 button** on the remote controller, then the **up button** and again the **P2 button**. Each time it is pressed, the drive responds with a beep and an up/down movement. At the end the drive responds with several beeps. You are now in the setting mode.

2. Use the **down button** on the remote controller to move the motor to the lower desired end position and stop it there using the **stop button**. Then press and hold the **stop button** again until the drive confirms with several beeps and a subsequent up/down movement.

3. Use the **up button** on the remote controller to move the motor to the lower desired end position and stop it there using the **stop button**. Then press and hold the **stop button** again until the drive confirms with several beeps and a subsequent up/down movement.

Thus, both end positions are set. The drive will automatically stop at the respective end positions during operations.

**Please note that saving the setting is only effective if both end positions are set.**

### 5.2 Delete the end positions



Press 1x **P2 button**, 1x **down button** and 1x **P2 button**. The drive confirms as always with a beep and an up/down movement. At the end, the drive confirms with several beeps. Both end positions are now deleted. You can set new end positions now.

## 6. Reset to factory settings

### learn button



Press and hold the **learn button** on the motor head with an object until the drive reacts only 3 times with a up/down movement and 3 beeps. Release the **learn button** again. The motor is now set to the factory settings. All previous connections and settings are deleted.

## 7. Technical data

Technical data	
Power supply:	DC12V
Protection class:	IP44
Operating temperature:	0°C to +50°C

Definition	Diameter D (mm)	Length L (mm)	Torque (Nm)	Rotational speed (U/min)	Voltage (V)	Power input (mA)	Weight (g)
ERB35LE	35	670	3,0	28	12	1660	1330

## 8. Bug fixing

Problem	Possible cause	Solution
Drive does not run	Battery weak	Charge the drive via the mains connection on the motor head with the corresponding charger.
	Remote controller without function	Change to a new battery.
	Transmitter is not set up	Establish the connection between the motor and the transmitter (see 3.2).
Drive is very slow, even with charged battery	Incorrect installation	Make sure that the shaft, materials and drive can move freely.
Drive stops in-between both end positions	Adapter or roller capsule not positioned correctly	Check that the adapter is correctly seated on the groove provided in the crown and, if necessary, screw the roller capsule into the shaft with a locking screw.
The end position changes marginally	Fabric changes due to temperature differences	Reset end position (see 5.1).

## 9. Warranty conditions

SIRO Antriebs- und Steuerungstechnik offers a 2-year warranty on new drives that have been professionally installed and properly operated in accordance with the installation instructions. The warranty covers all design faults, material defects and manufacturing faults.

Any defects occurring within the warranty period will be remedied by SIRO free of charge by supplying an equivalent or new product. Replacement delivery for warranty reasons does not result in general extensions of the original warranty period.

Any claims for compensation beyond this are excluded.