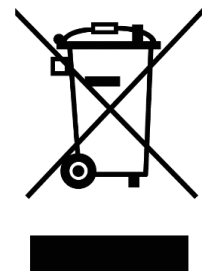




**Bidirectional 5-Channel Radio-Handheld Transmitter
with integrated timer
SIS1605**

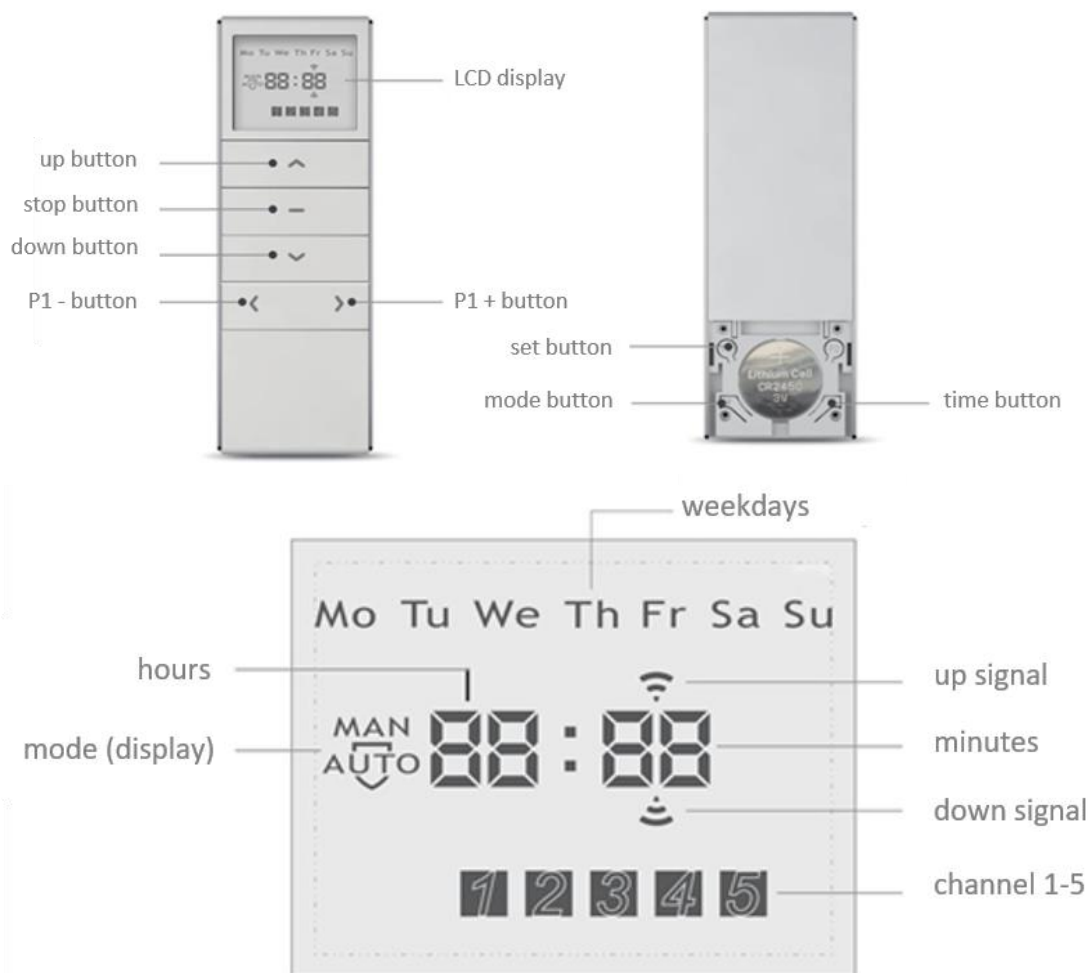
Compatible with bidirectional SIRO drives:

- ERBS15-LE
- ERBS25-LE
- EYAS25-LE



1. Functional overview

The remote control SIS1605 is a radio transmitter with integrated timer. You can use the transmitter to remotely control drives and radio receivers of the bidirectional LE-series from SIRO either manually or automatically with a program.



The SIS1605 remote controller has 5 radio channels with which the motors or radio receivers can be controlled individually or combined into several groups.

Furthermore, the handheld transmitter SIS1605 has three different modes:

Manual Mode (MAN): Normal remote controller without the time switch function

Automatic Mode (AUTO): Remote controller with timer function (main mode)

Random Mode (AUTO): In this mode, your settings are executed 15 minutes before or after the specified time. Example: You have set the driveway to 10.00 hours. This way your shading system will randomly drive up at 9.45 or 10.15.

Use the **mode button** (see figure) to select the respective mode.

2. Installation



The remote controller SIS1605 requires a battery cell type CR2450 – 3V as power source. To ensure that the device can execute all commands, it is recommended to replace empty batteries in time.

1. Open the battery compartment of the remote controller on the back by sliding the cover down.
2. Insert the battery into the battery compartment with the plus pole facing upwards.
3. Close the battery compartment.

3. Setting the weekday and time (only in manual mode)



During the setting mode, you always have 60 seconds time between each action. If no activity is performed during this period, the unit automatically returns to the operation mode. However, you can exit the setting mode at any time without saving any settings.

The weekdays are displayed in English:

Mo: Monday

Th: Thursday

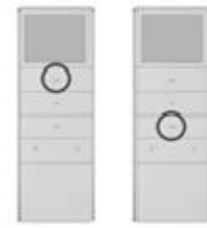
Su: Sunday

Tu: Tuesday

Fr: Friday

We: Wednesday

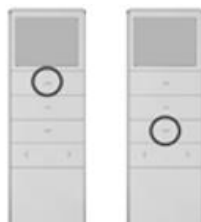
Sa: Saturday



1. To change into MAN-Mode, press and hold the **mode button**.

2. Press and hold the **time button** for 3 seconds. The hour display will now flash.

3. Press the **up** or **down button** to set the current hour. *Example here: 11*



4. Press the **P1 + button** to confirm. The minute display will now flash.

5. Press the **up** or **down button** to set the current number of minutes. *Example here: 11:01*

6. Press the **P1 + button** again to confirm. The weekday display will now flash.



7. Enter the current day by pressing the **up** or **down button**. Example here: Monday

8. Press and hold the **time button** for 3 seconds to save the setting. For final confirmation press the **time button** again briefly.

4. Establishing the connection between the motor and remote controller



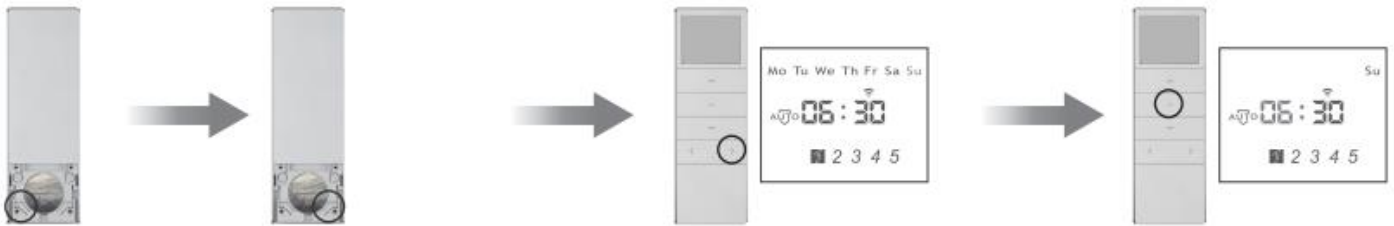
Before the SIS1605 remote controller can control one or more drives, the connection between the devices must be established. First select a channel on the SIS1605 remote controller that is to be used to control one or a group of drives. Make sure that the remote controller is in **manual mode**.

Please refer to the operation instructions of the LE-series drive you have received for the procedure of teaching-in and end position setting.

5. Setting the roll up and down times



- If the set time shows "--:--", it means that on this day of the week and in this channel no timer function is set.
- There are three possibilities available.
 1. Each weekday can be set individually (Su flashes)
 2. All weekdays have a uniform time (Mo - Su flash)
 3. The working days and the weekend have different times (Mo - Fr flash)



1. Switch to the AUTO mode using the **mode button**. Press and hold the **time button** for 3 seconds. You are now in setting mode.

2. Press **P1 + button** to set the group. The following pictures show an example of the first possibility of grouping.

3. Briefly press the **stop button** to confirm the setting. The hour display (roll-up time) flashes.



4. Press the **up** or **down button** to set the hours (roll up).

5. Press the **P1 + button** briefly. The minute display (roll up) is now flashing.

6. Press the **up** or **down button** to set the minutes (roll up).



7. Press **P1 + button** to confirm the minutes of the roll up time. The hour display of the roll up time now flashes.



8. Press the **up** or **down button** to set the hours (roll down).



9. Briefly press the **P1 + button**. The minute display (roll down) flashes.



10. Press the **up** or **down button** to set the minutes (roll down).



11. Briefly press the **P1+ button** to confirm the set minutes of the roll-down time. The display now shows Monday (Mo) with the roll up symbol.



12. After you have carried out the roll up and down times in sequence for the whole week, press the **time button** for 3 sec. The display for hours and minutes flashes. Your setting is now saved. You automatically leave the setting mode.

6. Bug fixing

Problem	Possible cause	Solution
The device does not work	The battery is incorrectly inserted or empty.	Check that the battery is inserted correctly. Replace the battery if necessary.
The drive cannot be moved up / down manually.	Automatic mode is active.	Press the time button to switch to manual mode. <i>Manual</i> appears in the display.
The drive does not move up / down at the set time.	Manual mode is active.	Press the time button to switch to automatic mode. <i>Auto</i> appears in the display.

7. Technical data

Technical data	
Power supply:	3 Volt
Battery type:	CR2450
Working current:	≤12mA
Protection class:	IP 20
Operating temperature:	-5°C to +40°C
Radio frequency:	433.92 MHz
Transmitter power:	5mW
Channels:	5
Compatibility:	Bidirectional SIRO LE-Serie

Check that you have received the correct device before commissioning. Also compare the frequency information on the motor or controller nameplate.

8. Warranty conditions

SIRO Antriebs- und Steuerungstechnik offers a 2-year warranty on new drives that have been professionally installed and properly operated in accordance with the installation instructions. The warranty covers all design faults, material defects and manufacturing faults.

Any defects occurring within the warranty period will be remedied by SIRO free of charge by supplying an equivalent or new product. Replacement delivery for warranty reasons does not result in general extensions of the original warranty period.

Any claims for compensation beyond this are excluded.